

Spark Plug Carrier and Flange Adaptor

Hardware Kit for **WAUKESHA**[®] VHP-GL Engines
CSA[®] Conversion

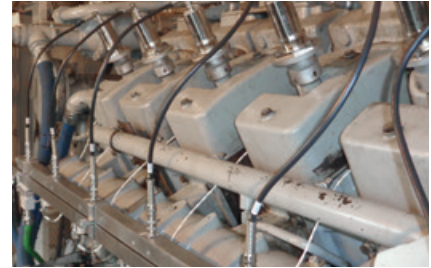
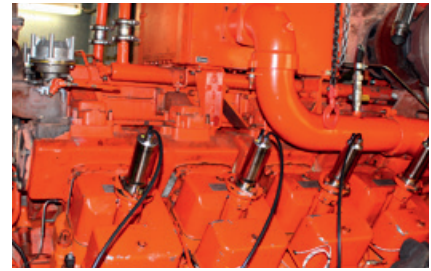


Ignition Systems
reliable • efficient • worldwide

Ordering Information

Spark Plug Carrier and Flange Adaptor Hardware Kit for **WAUKESHA®** VHP-GL Engines – CSA® Conversion

- For modification of standard ignition coil to flange ignition coil arrangement
- Available as single parts
- Stock item



A Primary Lead



P/N	Description	Equivalent to	Required Qty per Cylinder
95.01.020-30	Primary lead, Conventional Style, 3 pole ignition coil connector, 1/2-14 NPT outlet box adaptor	208503K, 593027-30	1
<i>alternative</i> 95.01.120-30	Primary lead, New Flex Style, 3 pole ignition coil connector, 1/2-14 NPT outlet box adaptor	95.01.020-30	1

B Flange Ignition Coil



P/N	Description	Equivalent to	Required Qty per Cylinder
06.50.035	Flange ignition coil	A69694G, 69694G, 591018	1
<i>alternative</i> 95.09.155 ¹⁾	Flange ignition coil with diagnostic interface	06.50.035	1

¹⁾ Same coil winding as P/N 06.50.035, but with diagnostic interface. Thus also equivalent to P/N 591018 and 69694G, A69694G.

C PolyMot™ Spark Plug Extension

P/N	Description	Equivalent to	Required Qty per Cylinder
06.80.321-T	PolyMot™ spark plug extension	A211797H, A211797P, 211357P, 211357U, A211797R	1

D Spark Plug

P/N	Description	Equivalent to	Required Qty per Cylinder
FB77WPCC	CHAMPION® spark plug, M18x1.5, reach 0.750 in, J-type Ir/Pt, HEX 7/8 in (22.2 mm)	69919, 60999T	1
<i>alternative</i> B8324	MOTORTECH MHP spark plug, M18x1.5, reach 0.750 in, J-type Ir/Ir, HEX 13/16 in (20.8 mm)		1
<i>alternative</i> GI3-3	DENSO® spark plug, M18x1.5, reach 0.750 in, J-type Ir/Pt, HEX 7/8 in (22.2 mm)		1

SparkView
MOTORTECH HIGH VOLTAGE INDICATOR

The SparkView is a handheld device developed by MOTORTECH that can monitor the high voltage required by the spark plug while the engine is running. With a measuring clamp or cable and the display for up to 40 kV, it is easy to determine the condition of the spark plugs and the time at which they need to be replaced.

Ordering Information and Optional Tools



A



B



C



D



E



F



E Adaptor for Flange Ignition Coil/Spark Plug Carrier

P/N	Description	Equivalent to	Required Qty per Cylinder
211749-MOT	Adaptor for flange ignition coil/spark plug carrier	211749	1

NOTE: Screws and washers for fastening of flange ignition coil not included. Hex head screws (3 pcs 5/16-18x3/4 in – WED P/N 21309) and washers (3 pcs 5/16 in – WED P/N 21051) have to be supplied by customer.

F Spark Plug Carrier

P/N	Description	Equivalent to	Required Qty per Cylinder
209567R-MOT	Spark plug carrier	209567R	1

NOTE: Screws and washers for fastening of flange adaptor not included. Hex head screws (4 pcs 1/4-28x1/2 in – WED P/N 21296) and lock washers (4 pcs 1/4 in – WED P/N 21050) have to be supplied by customer.

Optional Tools

Installation Tool for Spark Plug Carrier

P/N	Description
44.01.015	Installation tool for spark plug carrier



Spare Part for Installation Tool

P/N	Description
44.01.017	Feather key for installation tool

Extended Barrel Magnetic Spark Plug Sockets

P/N	Description
07.99.022-3-18	Magnetic spark plug socket, HEX 7/8 in (22.2 mm), 1/2 in drive, length 18 in (457.2 mm), for use with spark plugs P/N 69919, 60999T, FB77WPCC, GI3-3
07.99.022-4-18	Magnetic spark plug socket, HEX 13/16 in (20.8 mm), 1/2 in drive, length 18 in (457.2 mm), for use with spark plug P/N B8324



SparkView – High Voltage Indicator

P/N	Description
06.90.099-105	SparkView high voltage indicator – incl. BNC cable P/N 06.90.105, for use with flange ignition coils with diagnostic interface

Download now!



All Products at a Glance!

For further Information about the MOTORTECH products get our product guide online.



Distribution partner for DENSO spark plugs



Scan QR-Code to get to the download page



Scan QR-Code to subscribe



Once a month the latest news!

Subscription also at www.motortech.de/subscribe.html or send a short request via email: direkt@motortech.de

MOTORTECH GmbH

Hogrevestr. 21-23
29223 Celle
Germany
Phone: +49 (5141) 93 99 0
Fax: +49 (5141) 93 99 99
www.motortech.de
sales@motortech.de

MOTORTECH Americas, LLC

1400 Dealers Avenue, Suite A
New Orleans, LA 70123
USA
Phone: +1 (504) 355 4212
Fax: +1 (504) 355 4217
www.motortechamericas.com
info@motortechamericas.com

MOTORTECH Shanghai Co. Ltd.

Room 1018 Enterprise Square,
No. 228 Meiyuan Road,
Zhabei District, 200070 Shanghai
China
Phone: +86 (21) 6380 7338
www.motortechshanghai.com
info@motortechshanghai.com

P/N 01.15.046-EN | Rev. 09/2019 | MOTORTECH Sales Flyer Hardware Kit for WAUKESCHA® VHP-GL Engines

Disclaimer

The information described in this flyer is provided for informational purposes only, is subject to change without notice and should not be construed as a warranty, commitment, condition or offer by MOTORTECH or its affiliates. MOTORTECH assumes no responsibility or liability for any errors or inaccuracies that may be contained in this document.

Trademark Information

All OEM names and part numbers shown are for reference purposes only. All trademarks, logos and symbols used or shown in this MOTORTECH publication are exclusive objects to the right of their owners and are used for reference purposes only.

Distribution: