

VariStep3

MOTORTECH Stepper Motor Driver



■ Technical Data

VariStep3

MOTORTECH STEPPER MOTOR DRIVER

MOTORTECH Stepper Motor Driver

The VariStep3 stepper motor driver enables optimum control of the various VariFuel2 air/gas mixer types and ITB throttle bodies with integrated stepper motor from MOTORTECH.

- Precise air/gas mixer and throttle body adjustment due to microstep operation
- Very fast response times
- Increased power output provides high torque and quick movement even when driving big stepper motors
- Accelerated reference run
- LEDs displaying unit status and activity
- Combination of several units without signal amplifier/splitter
- Integrated CANopen and Modbus RTU interface
- Configuration via MICT software
- Error data logging for improved diagnostic options
- Compact design
- Plug-in terminals
- Easy access to connectors and switches
- Switch board installation on DIN rail



Technical Data

- 18 to 32 V DC power supply
- -20 °C up to +60 °C (-4 °F up to 140 °F) permitted ambient temperature
- 0 to 20 mA/0 to 10 V analog input and output, flexible configuration
- 5 digital inputs, 5 to 32 V compatible, DC-isolated
- 6 digital outputs, up to 32 V, 100 mA, DC-isolated

Interfaces

- CAN Bus 2.0b interface (CANopen protocol)
- RS485 interface (Modbus RTU)
- USB 1.1 interface

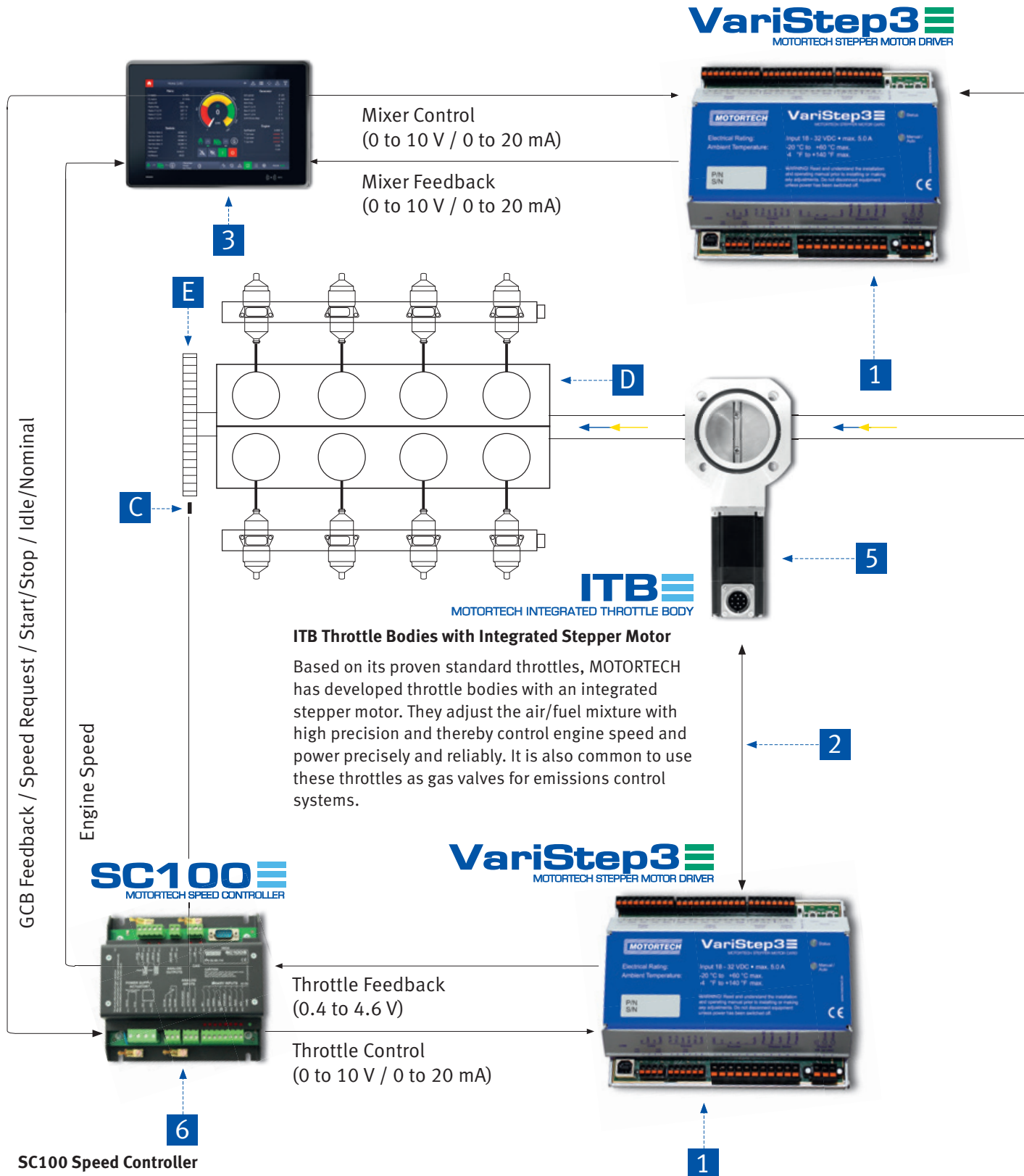
Configuration

- Using the graphic user interface MICT (MOTORTECH Integrated Configuration Tool)
- Manual control via push-button

Housing

- Protection class IP 20
- Dimensions 160 x 126 x 62 mm (6.3 x 5.0 x 2.4 in)

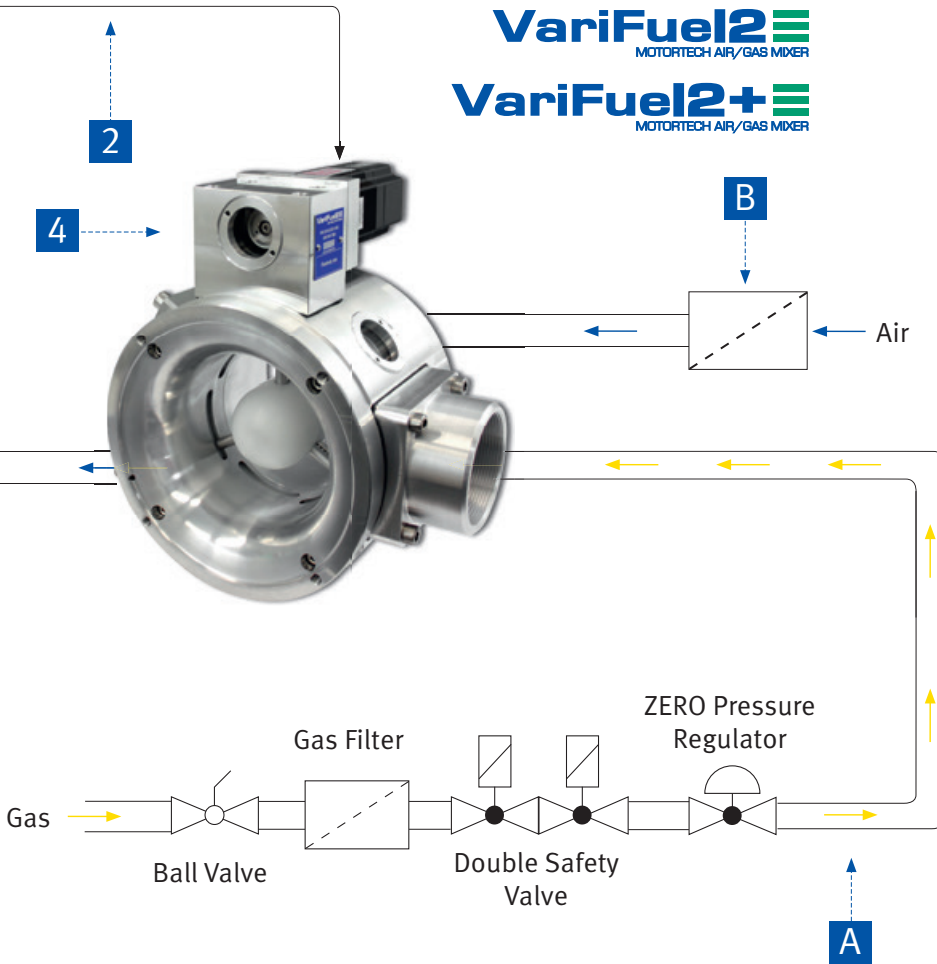
System Overview



SC100 Speed Controller

The SC100 is a digital speed controller for stationary gas engines, which can control various types of actuators and guarantees precise and fast control of the engine speed in island and mains parallel operation.

System Overview



VariFuel2 and VariFuel2+ Air/Gas Mixer

MOTORTECH's VariFuel2 and VariFuel2+ are high-tech variable Venturi type air/gas mixers that can constantly adjust to any fuel changes and allow the engine to operate at its most efficient point. Coupled to an air/fuel ratio controller, lean-burn or stoichiometric, they precisely regulate the mixture.

VariFuel2 and VariFuel2+ air/gas mixer series 100, 140, 200, 250, 300 and 350 are available for engines with an air requirement up to 12.000 m³/h and are equipped with a high precision stepper motor which is extremely precisely actuated by the VariStep3 stepper motor driver. Different flow bodies and variable gas inlet and mixture outlet configurations allow flexible adaptation of the gas mixer to the respective application.

Description

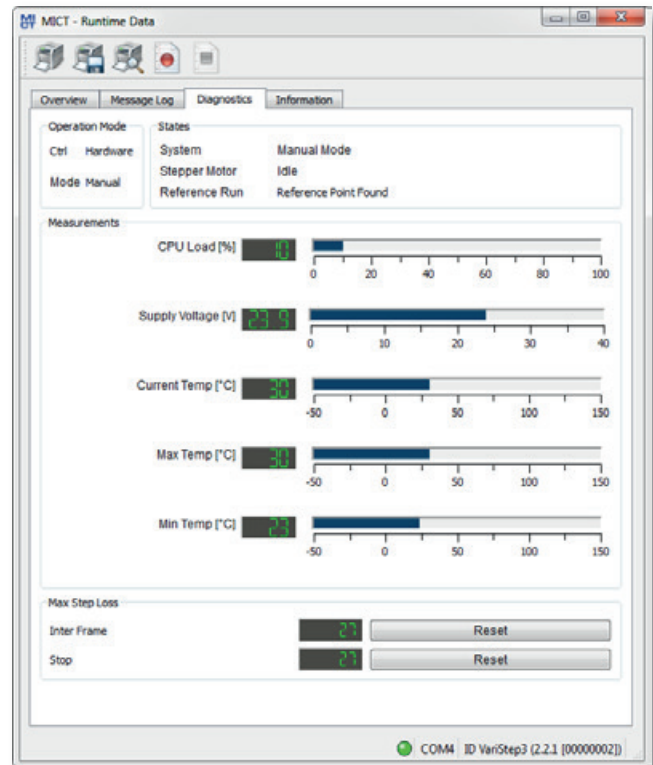
- | | |
|---|-------------------|
| 1 VariStep3 stepper motor driver | A Gastrain |
| 2 Stepper motor harness | B Air filter |
| 3 Master control / Emission control system | C Magnetic pickup |
| 4 VariFuel2/VariFuel2+ air/gas mixer | D Engine |
| 5 ITB throttle body with integrated stepper motor | E Flywheel |
| 6 SC100 speed controller | |

Ordering Information

MICT MOTORTECH Integrated Configuration Tool

The MICT is the graphical user interface for the VariStep3 stepper motor driver. All functions of the VariStep3 are user programmable and can be displayed individually.

- Language selectable (DE/EN/CN)
- Microsoft® Windows 7 and Windows 10 compatible
- Programmable for different VariFuel models, ITB throttle series and throttle body drive kits
- Configuration of inputs and outputs
- Preadjustment of two fixed mixer positions
- Display of debit and actual value as well as operation status
- Permanent data acquisition
- Configuration of CAN Bus interface for ALL-IN-ONE signals
- Print function of a given moment in the operation can be used for external problem analysis, etc.
- Context sensitive online help
- Different access levels to avoid accidental misconfigurations



Ordering Information

P/N	Description	Scope of Supply
31.01.960	VariStep3 stepper motor driver	Stepper motor driver, USB interface cable, MICT configuration software, Operating manual

Download now!



All Products at a Glance!

For further Information about the MOTORTECH products get our product guide online.



Scan QR-Code to get to the download page



Distribution partner for DENSO spark plugs



Scan QR-Code to subscribe



Once a month the latest news!

Subscription also at www.motortech.de/subscribe.html or send a short request via email: direkt@motortech.de

MOTORTECH GmbH

Hogrevestr. 21-23
29223 Celle
Germany
Phone: +49 (5141) 93 99 0
Fax: +49 (5141) 93 99 99
www.motortech.de
sales@motortech.de

MOTORTECH Americas, LLC

1400 Dealers Avenue, Suite A
New Orleans, LA 70123
USA
Phone: +1 (504) 355 4212
Fax: +1 (504) 355 4217
www.motortechamericas.com
info@motortechamericas.com

MOTORTECH Shanghai Co. Ltd.

Room 1018 Enterprise Square,
No. 228 Meiyuan Road,
Zhabei District, 200070 Shanghai
China
Phone: +86 (21) 6380 7338
www.motortechshanghai.com
info@motortechshanghai.com

P/N 01.55.010-EN | Rev.10/2019 | MOTORTECH Sales-Flyer VariStep3

Disclaimer

The information described in this flyer is provided for informational purposes only, is subject to change without notice and should not be construed as a warranty, commitment, condition or offer by MOTORTECH or its affiliates. MOTORTECH assumes no responsibility or liability for any errors or inaccuracies that may be contained in this document.

Trademark Information

All OEM names and part numbers shown are for reference purposes only. All trademarks, logos and symbols used or shown in this MOTORTECH publication are exclusive objects to the right of their owners and are used for reference purposes only.

Distribution: